

## GL2D - 2" Linear Lensed Surface (48mm)

Surface/Pendant Wrap Around Lensed Fixture

## GL2D

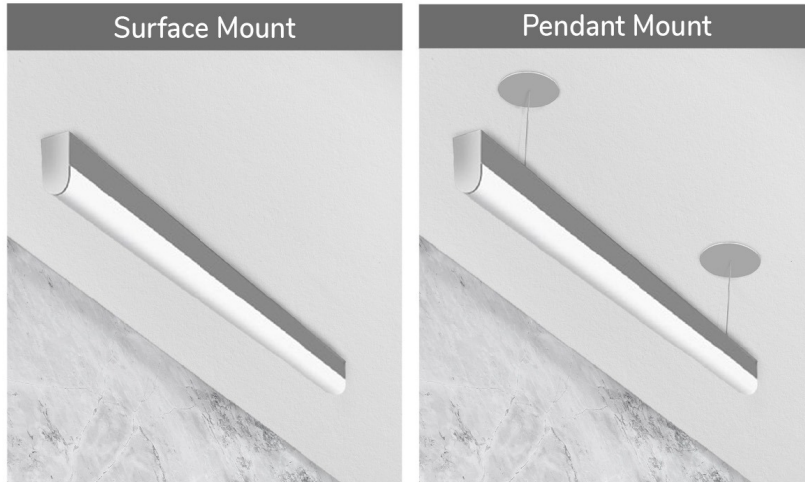
The GL2D 2" linear wrap around lens fixture offers a simple, clean, and economical way to light your space. The GL2D is available in surface or pendant mount. It is offered in a 4 foot and 8-foot lengths that are readily available and easy to install. The fixture is available in three outputs, four CCT's and with its diffuse lens and sleek form its functional aesthetic and performance is ideal for many applications.

PROJECT:

TYPE:


SPECIFIER:

DATE:




### Key Points (GL2D)

#### Source / Optics

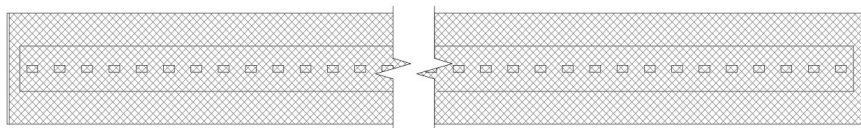
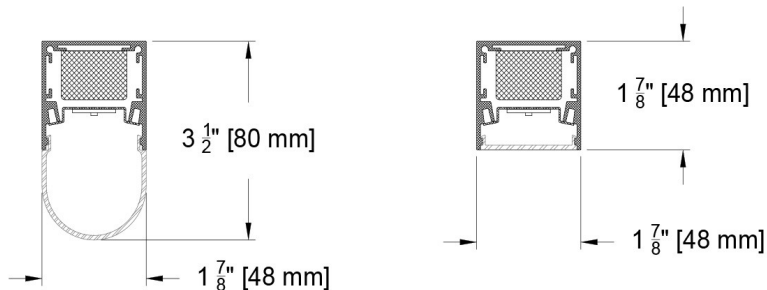
- Up to 1185 delivered Lumens per foot.
- 70+ Lumens per watt.
-  Supports CA Title 24 part 6 compliance meeting JA8 requirements.
- Tubular wrap around diffuser with lambertian distribution (standard).
- Flat Lense
- CCT offerings - 2700k, 3000k, 3500k and 4000k.
- 90+ CRI and 50+ R9.
- Lifetime: L70B50>55,000 hours at 40°C Ambient.

#### Housing

- White standard finish with custom paint finishes available.
- 3 Mounting types - Surface, Cable or Stem.
-  Damp listed.

#### Driver And Control

- Integral drivers.
- 0.1% Dimming available in 0-10 or DALI-2 protocols
- Flicker Free to IEEE 1789-2015 (no effect to low risk).
- Universal 120v to 277v.



Ordering Codes

PROJECT: SPECIFIER:  
DATE: TYPE: QUANTITY:

Ordering Code Example: GL2D-WR-CBM-8-B-F8-30-SY1-BLK

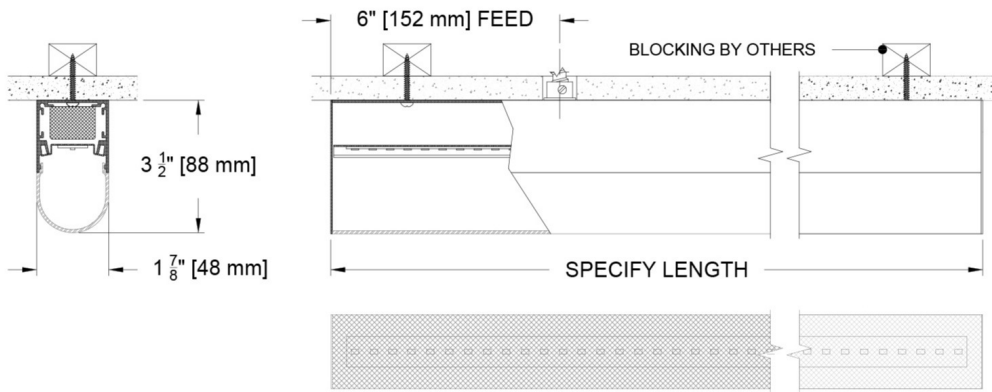
FIXTURE	APERTURE	MOUNTING	LENGTH	HEIGHT	SOURCE / WATTS	CCT	DRIVER / CONTROL	HOUSING FINISH	ACCESSORIES
GL2D									
GL2D Linear surface/pendant wrap around lensed downlight	WR Wrap Around Lens  FL Flat Lens	SM Surface Mount  CBM Cable Mount  STM Stem Mount	4 4 foot nominal (47-3/4")  8 8 foot nominal (95-1/4")  - Custom Consult Factory	B Blank - use for Surface Mount  -- Specify Length of Stem or Cable in inches*	F4 5W 395Lm 90+CRI, 50+R9 values per foot  F8 10W 790Lm 90+CRI, 50+R9 values per foot  F12 15W 1185Lm 90+CRI, 60+R9 values per foot  ● ● Supports CA T24 part 6 compliance meeting JA8 requirements	27 2700K  30 3000K  35 3500K  40 4000K	SY1 0-10 1.0%, UNV (120-277V) linear  SY2 0-10 1.0%, UNV (120-277V) log  EldoLED  E1 0-10 0.1%, UNV (120-277V) log  E2 DALI-2 0.1%, UNV (120-277V) log  E3 0-10 0.1%, UNV (120-277V) linear	Standard  WHT White  Optional  BLK Black  C Custom/RAL*  *See Finish Guide  FINISH GUIDE LINK	EM Emergency Pack

## Ceiling Cutouts and Dimensions

### GL2D-S-WR- Surface Mount Wrap Around Lens

SM

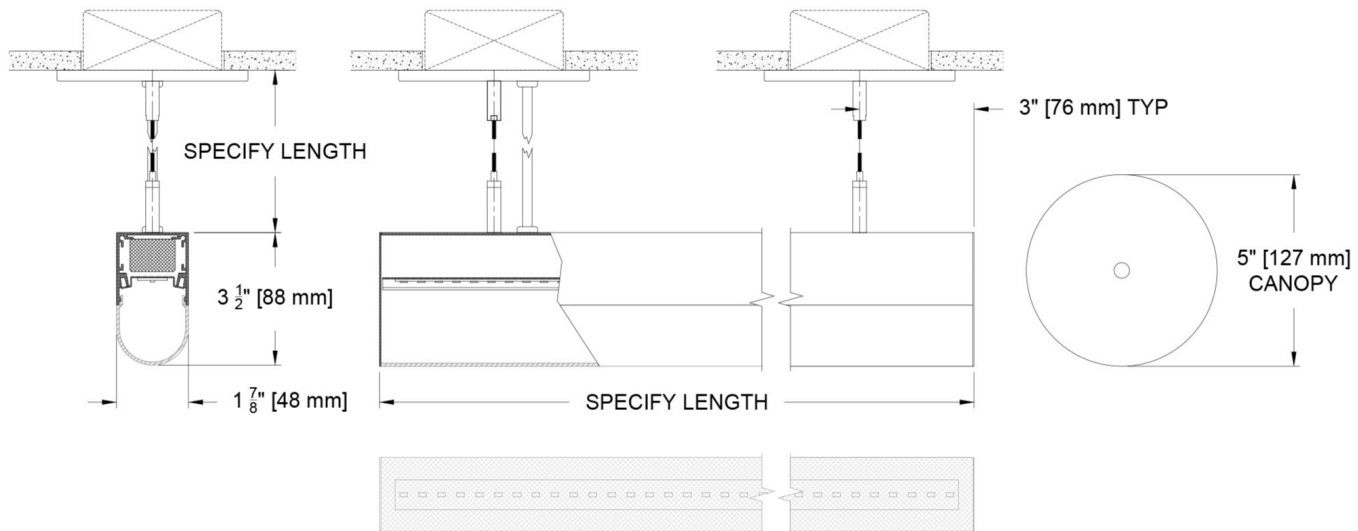
(GL2D-S-WR-SM)



### GL2D-S-WR- Pendant Cable Mount Wrap Around Lens

CBM

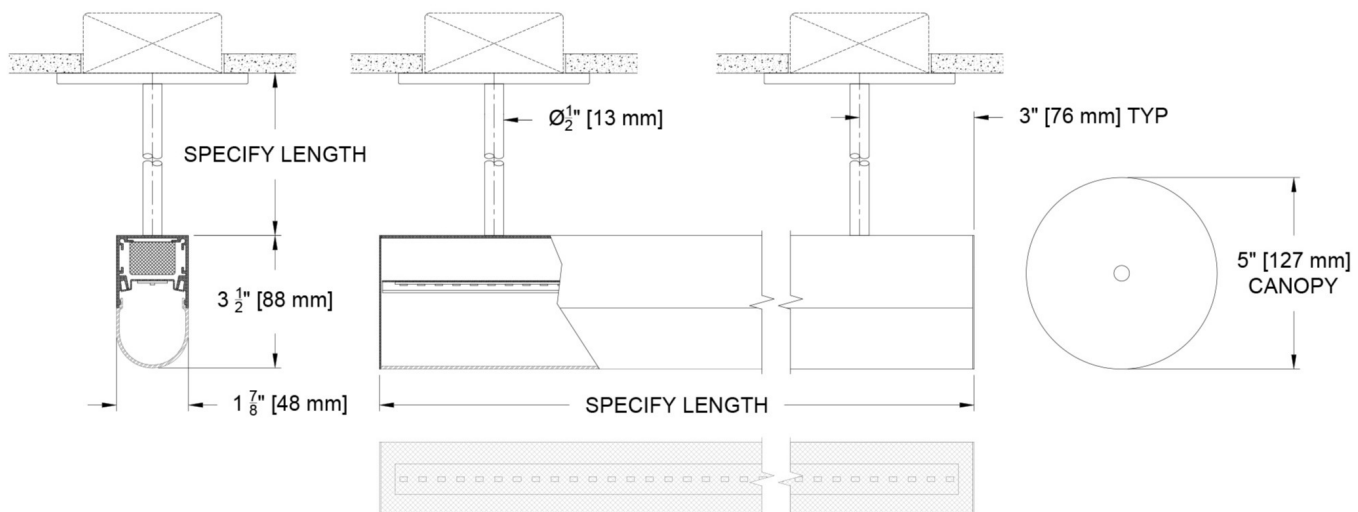
(GL2D-S-WR-CBM)



### GL2D-S-WR- Pendant Stem Mount Wrap Around Lens

STM

(GL2D-S-WR-STM)

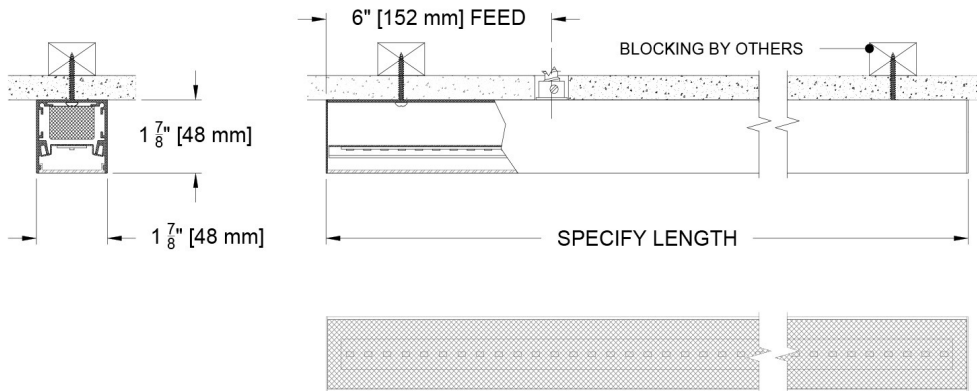


## Ceiling Cutouts and Dimensions

### GL2D-S-FL - Surface Mount Flat Lens

SM

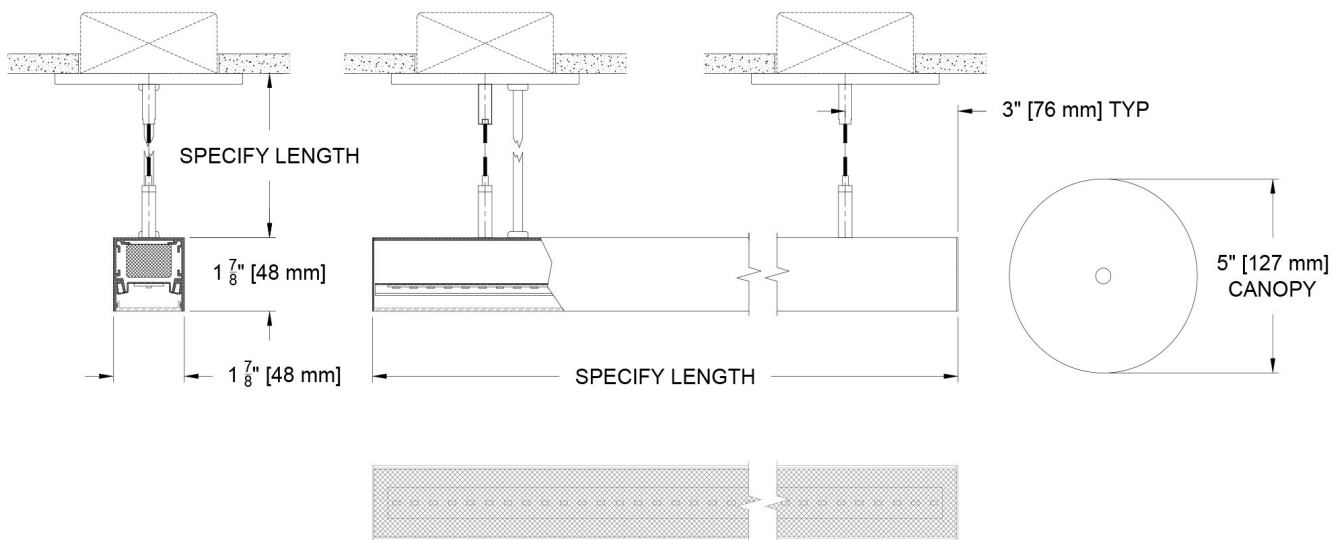
(GL2D-S-FL-SM)



### GL2D-S-FL- Pendant Cable Mount Flat Lens

CBM

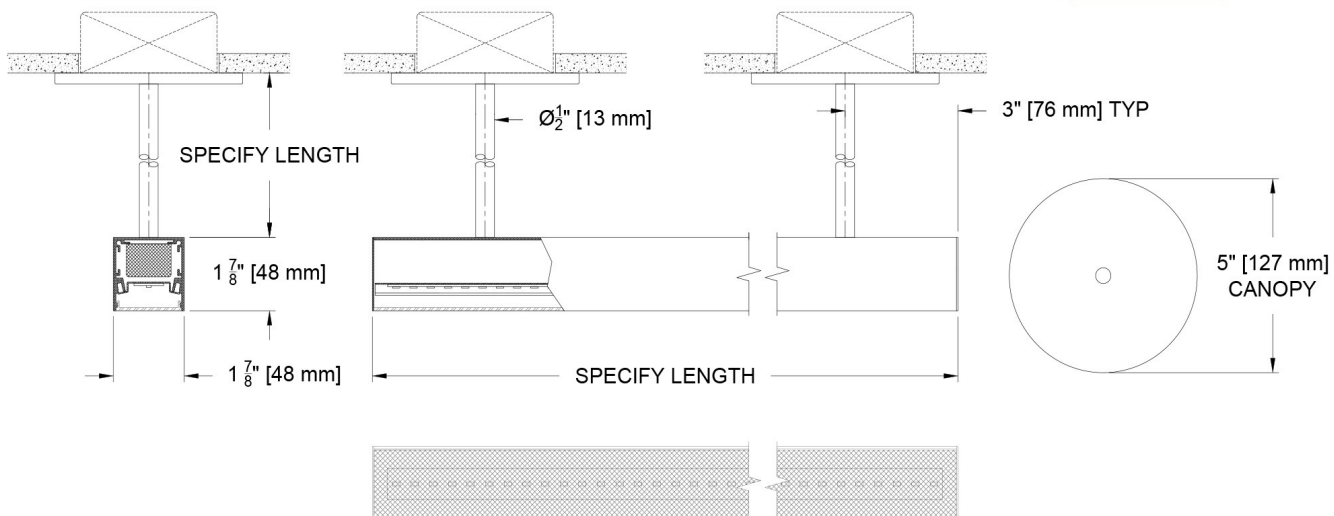
(GL2D-S-FL-CBM)



### GL2D-S-FL- Pendant Stem Mount Flat Lens

STM

(GL2D-S-FL-STM)



Photometric Table

Values are per foot. All flux measurements are delivered lumens based on 3000k and 1' (ft) length from a production representative product. Measurements can vary +/- 10% from LED manufacturer rated flux range.

Lumens per Foot Photometrics									
2" Linear Lensed		Tubular Wrap Around Lens				Flat Lens			
Source	System watts (W/ft)	Delivered Lumens (lm/ft)	Lumens/ Watt	Peak cd	10% Field	Delivered Lumens (lm/ft)	Lumens/ Watt	Peak cd	10% Field
F4	5	Consult Factory				Consult Factory			
F8	10								
F12	15								
CCT Multiplier		ISO Chart Coming Soon				ISO Chart Coming Soon			
CCT	Citizen								
2700	0.95								
3000	1.00								
3500	1.02								
4000	1.03								

Color Data

All data is based from goniometer measurements of production representative product. All lumen values can vary +/- 10% from LED manufacturer rated data range. Measurements at 3000 CCT unless otherwise noted.

SO8 and SO15

- <3 MacAdam Ellipse (<3 SDCM)
- 90+ CRI and RF
- 50+R9, Hue Bin 1 and 16

